

Stingray 4 Point-of-Sale Solution



Next-generation Point-of-Sale workstations from Panasonic combines powerful and stylish hardware with legendary quality, services and support.

Provide customers speed of service with a synchronized and flexible POS system for operational efficiencies.

DESIGNED FROM DECADES OF EXPERIENCE IN POINT-OF-SALE

The Stingray 4 fuses powerful computing and expendable hardware in a compact durable format, designed specifically for demanding, fast-paced restaurant and retail environments. Available with multiple performance levels, mounting options and peripheral choices, Panasonic's flexible Stingray 4 workstation is software agnostic and adapts to the specific needs of your operation.

Benefits & Key Features



HIGH PERFORMANCE

- The most powerful Intel® i7 with flexible options to best meet your needs
- Customizes your POS needs with a variety of options, including memory, Bluetooth, Wi-Fi and USB ports



SMART DESIGN & FEATURES

- Full HD 1080p display with sleek, modern design for better visibility
- Flexible expansion features for external displays and fingerprint reader



TRUSTED DURABILITY

- Strong, industrial grade construction
- Modular design for easy serviceability in multiple environments



SERVICE & SUPPORT

- Comprehensive 24/7 technical support resources, plus six-year warranty
- Over 35 years of deployment experience

JS980 Spec Sheet

		Lite	Mid	Pro	Elite
System	Motherboard	D36	D86	D86	D86
	Processor	Intel Celeron Bay Trail J1900 2GHz, 10W	Celeron 3965U Kaby Lake 2.2GHz, 2M, 15W	Intel i3-7100U Kaby Lake 2.4GHz, 3m, 15W	Intel i5-7300U Kaby Lake 2.6GHz, 3m, 15W
	Chipset	CPU Intrgrated			
	System Memory	1x DDR3L SO-DIMM 4GB (8GB Max)	1x DDR3L SO-DIMM 4GB (16GB Max)		1x DDR3L SO-DIMM 8GB (8GB Max)
	Storage Device	1x 2.5" 64GB SSD	1x 2.5" 128GB SSD		1x 2.5" 256GB SSD
	Graphics Engine	Intel HD Graphic DX11 and OCL 1.1	Intel HD Graphic DX12 and OCL4.2		
	LCD Touch Panel	LCD Size	15" TFT LCD		
Brightness		350 nits			
Resolution		1024 x 768			
Touch Screen		True-Flat PCAP Touch			
Expansion	Mini PCI-E Slot	N/A	1		
	USB	1x USB3.0, 4x USB2.0		4x USB3.0, 2x USB2.0	
External I/O Ports	Serial Port	3x RJ48 (powered RS232) (default 0V, COM1,2 0V/5V; COM3 0V12V)	3x RJ45 (powered RS232) (default 0V, COM1,2 0V/5V; COM3 0V12V)		
	Lan	1x RJ45			
	Cash Drawer	1x RJ11 (12V/24V)			
	Parallel Port	1 (Optional)	N/A		
	VGA	1x DB15			
	DC Jack	1x 4 Pin (with lock)			
	Power	Power Supply	65W / 19V	90W / 19V	
Connectivity	WLAN	802.11 a/b/g/n WLAN Card & antenna + BT4.0 (optional)			
Temperature/Optional	MSR	3 Track MSR (USB) Encryptable			
	Powered USB	1x 12V / 1x 24V (Requires upgraded Power Supply)			
	Fingerprint	Digital Persona Module (USB)			
	2nd Display	10.1" (1024x600), 15" (1024x768)			
	Customer Display	VFD Display 2x20 char			
Compliance	EMC & Safety	FCC Class A, CE Mark. LVD, cUL			
Environment	Operating Temp	0°C ~ 35°C (32°F ~ 95°F)			
	Storage Temp	-20°C ~ 60°C (-4°F ~ 140°F)			
	Humidity	20% ~ 85% RH non-condensing			
Dimensions	W x D x H	363 x 229 x 309 mm (14.3" x 9.0" x 12.2")			
Weight	Head Unit	4.3kg (9.5lbs)			
	W/Stand	6.8kg (15lbs)			
OS Support		Windows 7, POSReady7, Windows 8.1 Industry, Windows 10 IoT Enterprise, Linux (to support all listed OS, special order CPU and mothboards are available)			

ONE SOLUTION. ONE PARTNER.

ONE SEAMLESS CUSTOMER EXPERIENCE.

ClearConnect is a holistic solution designed for quick service restaurant (QSR) owners that integrates all your technology to work together, whether it's Panasonic technology or another vendor's. ClearConnect increases restaurant efficiency, lowers food and labor costs, and enhances the customer experience, setting your restaurant apart from the competition. Explore how ClearConnect can optimize your restaurant and improve every step of your customers' journey.

SMART LOCKERS

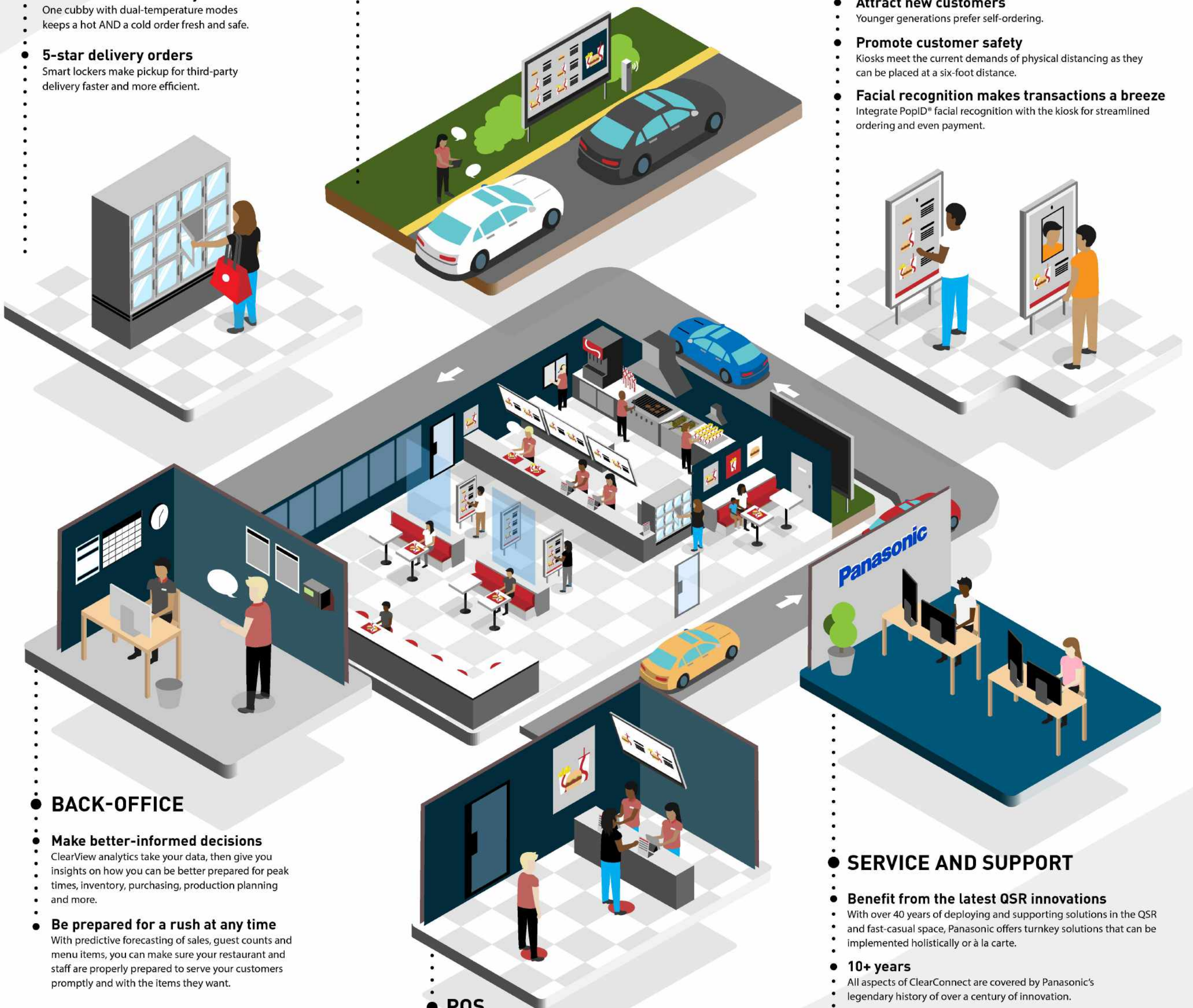
- **Improve counter service**
With smart lockers, take-out and to-go orders can have their own designated space for safe, contactless delivery.
- **Fresh food at the ready**
One cubby with dual-temperature modes keeps a hot AND a cold order fresh and safe.
- **5-star delivery orders**
Smart lockers make pickup for third-party delivery faster and more efficient.

DRIVE-THRU

- **Make it easy for customers to try new or promo items**
With real-time menu modification, you can cross-sell, up-sell and promote dynamically to push real-time offers. Real-time analytics can also be used to automatically customize offers by daypart to lift sales and pre-order margins.
- **Increase order accuracy**
Attune II drive-thru communication system improves sound quality so employees can hear orders clearly and correctly the first time.
- **Speed up order time with line busting**
Integrated rugged tablets for line busting moves the customer through quickly and reduces wait times.

KIOSKS

- **Correct orders = happy customers**
Self-order kiosks make it so customers can input their order exactly how they want.
- **Upsell**
When a customer inputs their own order on a kiosk, you can experience up to an average of a 30% increase on the average order.
- **Better handle peak times**
Free up employees so they can focus on essential tasks to better handle peak times.
- **Attract new customers**
Younger generations prefer self-ordering.
- **Promote customer safety**
Kiosks meet the current demands of physical distancing as they can be placed at a six-foot distance.
- **Facial recognition makes transactions a breeze**
Integrate PopID® facial recognition with the kiosk for streamlined ordering and even payment.



BACK-OFFICE

- **Make better-informed decisions**
ClearView analytics take your data, then give you insights on how you can be better prepared for peak times, inventory, purchasing, production planning and more.
- **Be prepared for a rush at any time**
With predictive forecasting of sales, guest counts and menu items, you can make sure your restaurant and staff are properly prepared to serve your customers promptly and with the items they want.

POS

- **Serve more customers, faster**
With the variety of point-of-sale (POS) options—fixed, mobile, line busting—you can speed up transaction time and provide exceptional customer service with conversational ordering.
- **Modify orders quickly**
With iQTouch, our comprehensive QSR POS software solution, it's easy to accurately input unique orders.

SERVICE AND SUPPORT

- **Benefit from the latest QSR innovations**
With over 40 years of deploying and supporting solutions in the QSR and fast-casual space, Panasonic offers turnkey solutions that can be implemented holistically or à la carte.
- **10+ years**
All aspects of ClearConnect are covered by Panasonic's legendary history of over a century of innovation.
- **Exceptional service and support**
Working with one partner to manage all your tech means that you get quicker and better support, resulting in optimized efficiency and less downtime.

Smart Locker

Contactless carryout simplified

Empower your customers with a dedicated solution for the fast-growing off-premise dining segment with pick-up technology to complement their ordering experience.



With the rapid evolution of Smart Locker technology, Panasonic understands you may have some questions. Here are some of the key items Panasonic has addressed with our Smart Locker technology.



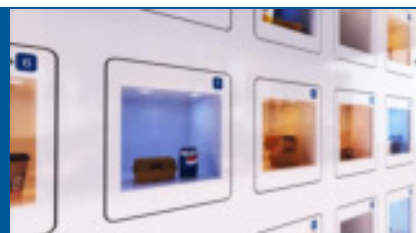
HOW DO I PROTECT FOOD SAFETY?

Safety is always key when fulfilling a food order. Why would you want to expose food to contamination, risk, or loss in an open or partially open storage environment? Our Smart Lockers are fully enclosed to guarantee food safety and reduce exposure to risk or loss.



ONE LOCKER, TWO SOLUTIONS

Panasonic takes the split locker cubby to a whole new dimension, with the ability to put both hot and cold food in one locker. That's right – with the split cubby capability, we can even ensure your cold salad and your hot burger are just that.



WHY WAIT? WE'LL HAVE YOU UP AND RUNNING RIGHT AWAY

Now that you've seen the advantages, why wait? Because the locker solutions can stand-alone, we'll have you up and running right away, allowing customers to see you in a whole new light.

Bundle all of this with our 40 years of experience in providing turn-key solutions inclusive of hardware, software, design, deployment, and support in a connected environment or as individual solutions to complement existing technologies.

CONTACTLESS CARRY-OUT IN 3 EASY STEPS

STEP 1

CUSTOMER ORDERS

Customer orders through existing mobile app, website, call in, or self-ordering kiosk.

STEP 2

CUSTOMER IS ALERTED

Order is completed, food is loaded into the locker, and customer receives notification through native app or SMS message.

STEP 3

UNIT IS UNLOCKED

Upon arrival, the customer enters pin or scans QR code to retrieve their food for a contactless experience.